



Tourism Australia

Table 1 - Visitors by country of residence

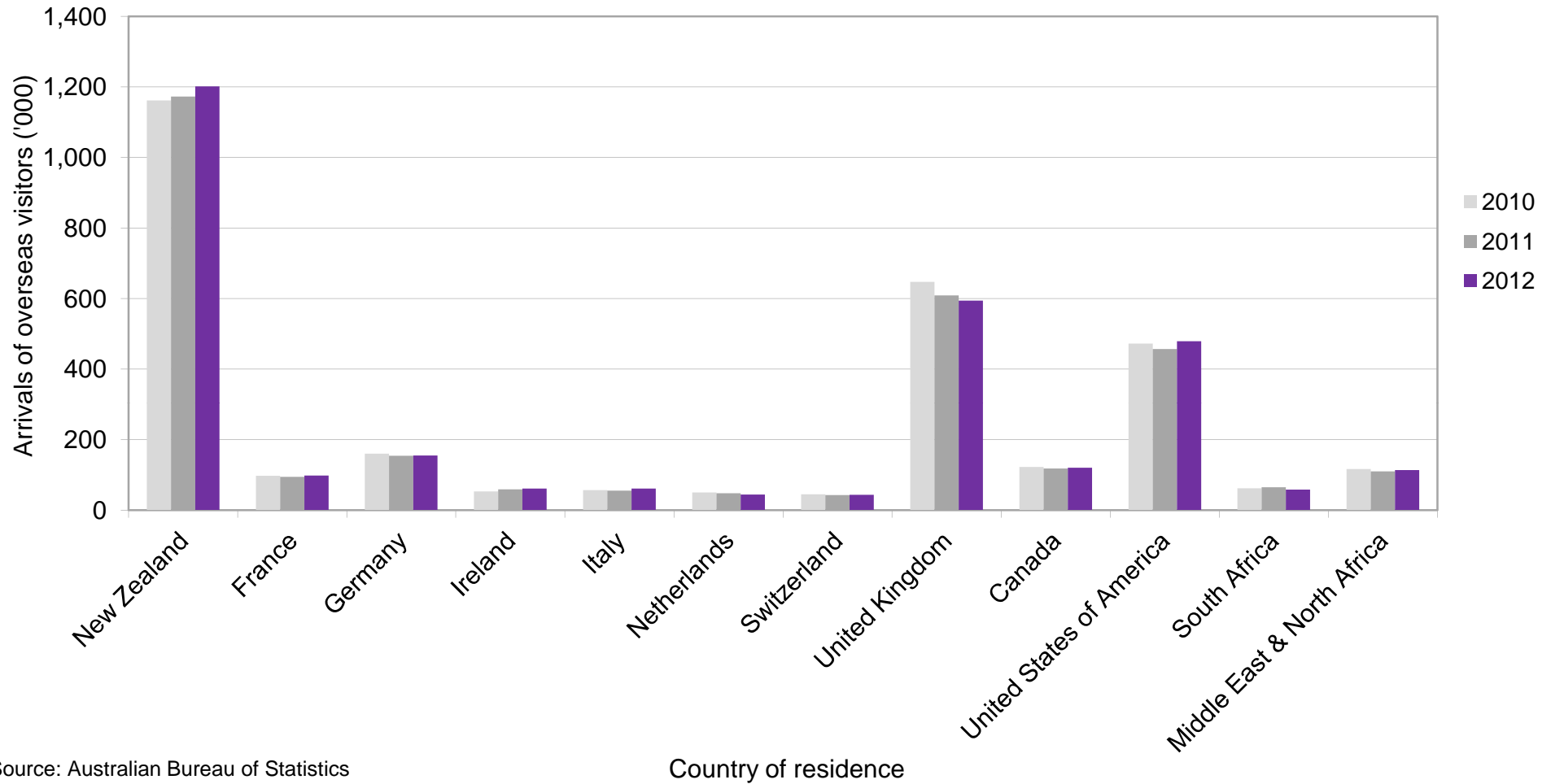
Country of residence	Year ended 31 December			Month of December			YE
	2011	2012	12/11	2011	2012	12/11	Dec 12
	'000	'000	% change	'000	'000	% change	Ranking
Oceania & Antartica							
Fiji	32.5	32.8	0.9	5.0	5.2	4.0	27
New Caledonia	41.7	38.7	-7.2	4.8	4.4	-8.3	24
New Zealand	1,172.7	1,201.0	2.4	112.7	112.1	-0.5	1
Papua New Guinea	51.9	56.6	9.1	6.6	8.2	24.2	20
Other	44.5	42.6	-4.3	5.4	4.5	-16.7	
Total	1,343.3	1,371.7	2.1	134.5	134.4	-0.1	
Europe							
Austria	14.1	14.2	0.7	1.7	2.0	17.6	34
Belgium	15.5	15.6	0.6	2.1	1.9	-9.5	33
Denmark	22.0	22.5	2.3	3.4	3.6	5.9	30
Finland	12.1	13.3	9.9	2.0	2.4	20.0	35
France	94.0	97.6	3.8	11.4	12.3	7.9	14
Germany	153.9	154.8	0.6	18.4	19.8	7.6	11
Greece	7.5	8.6	14.7	1.3	1.3	0.0	37
Ireland	58.8	61.3	4.3	7.1	7.5	5.6	17
Italy	55.1	61.1	10.9	8.4	9.4	11.9	18
Netherlands	47.7	44.2	-7.3	7.4	6.5	-12.2	22
Norway	17.9	19.0	6.1	2.8	3.4	21.4	31
Russian Federation	14.4	16.8	16.7	3.2	3.6	12.5	32
Spain	22.7	23.7	4.4	2.5	2.8	12.0	29
Sweden	34.3	36.3	5.8	6.8	8.1	19.1	26
Switzerland	42.4	43.4	2.4	6.5	7.6	16.9	23
United Kingdom	608.3	593.6	-2.4	93.0	94.8	1.9	3
Other	50.0	56.4	12.8	7.9	9.6	21.5	
Total	1,270.7	1,282.4	0.9	185.9	196.6	5.8	
The Americas							
Brazil	29.1	31.0	6.5	4.9	5.2	6.1	28
Canada	117.7	120.0	2.0	15.1	15.9	5.3	13
United States of America	456.2	478.9	5.0	52.6	56.1	6.7	4
Other	42.8	53.5	25.0	5.0	7.1	42.0	
Total	645.8	683.4	5.8	77.6	84.3	8.6	
South Africa							
	64.3	57.7	-10.3	10.2	10.6	3.9	
Middle East & North Africa							
Israel	12.4	10.4	-16.1	1.1	0.9	-18.2	36
United Arab Emirates	45.0	50.5	12.2	5.4	6.1	13.0	21
Other	52.5	52.1	-0.8	5.3	5.6	5.7	
Total	109.9	113.0	2.8	11.8	12.6	6.8	
Southeast Asia							
Brunei	8.0	7.1	-11.3	0.8	1.2	50.0	38
Indonesia	140.4	145.6	3.7	17.7	17.1	-3.4	12
Malaysia	241.2	262.7	8.9	26.6	29.7	11.7	7
Philippines	56.8	59.0	3.9	5.4	5.6	3.7	19
Singapore	318.5	343.6	7.9	41.6	46.4	11.5	6
Thailand	85.4	83.9	-1.8	6.9	7.9	14.5	16
Vietnam	33.7	37.4	11.0	2.8	3.9	39.3	25
Other	12.9	12.7	-1.6	1.4	1.3	-7.1	
Total	896.9	952.0	6.1	103.2	113.1	9.6	
Northeast Asia							
China	542.0	626.4	15.6	47.8	54.1	13.2	2
Hong Kong (SAR of China)	166.3	176.6	6.2	18.7	21.1	12.8	9
Japan	332.7	353.9	6.4	30.9	33.1	7.1	5
Korea	198.0	196.8	-0.6	20.7	20.7	0.0	8
Taiwan	84.4	94.7	12.2	6.5	7.4	13.8	15
Other	5.4	5.9	9.3	0.6	0.7	16.7	
Total	1,328.8	1,454.3	9.4	125.2	137.1	9.5	
Southern Asia							
India	148.2	159.2	7.4	16.1	22.4	39.1	10
Other	40.6	46.1	13.5	5.1	6.5	27.5	
Total	188.8	205.3	8.7	21.2	28.9	36.3	
Total	5,875.3	6,145.5	4.6	673.6	720.9	7.0	

Source: Australian Bureau of Statistics, Overseas Arrivals and Departures, 3401.0. ABS data used with permission from the Australian Bureau of Statistics



Chart 1 - Western hemisphere visitors by country of residence

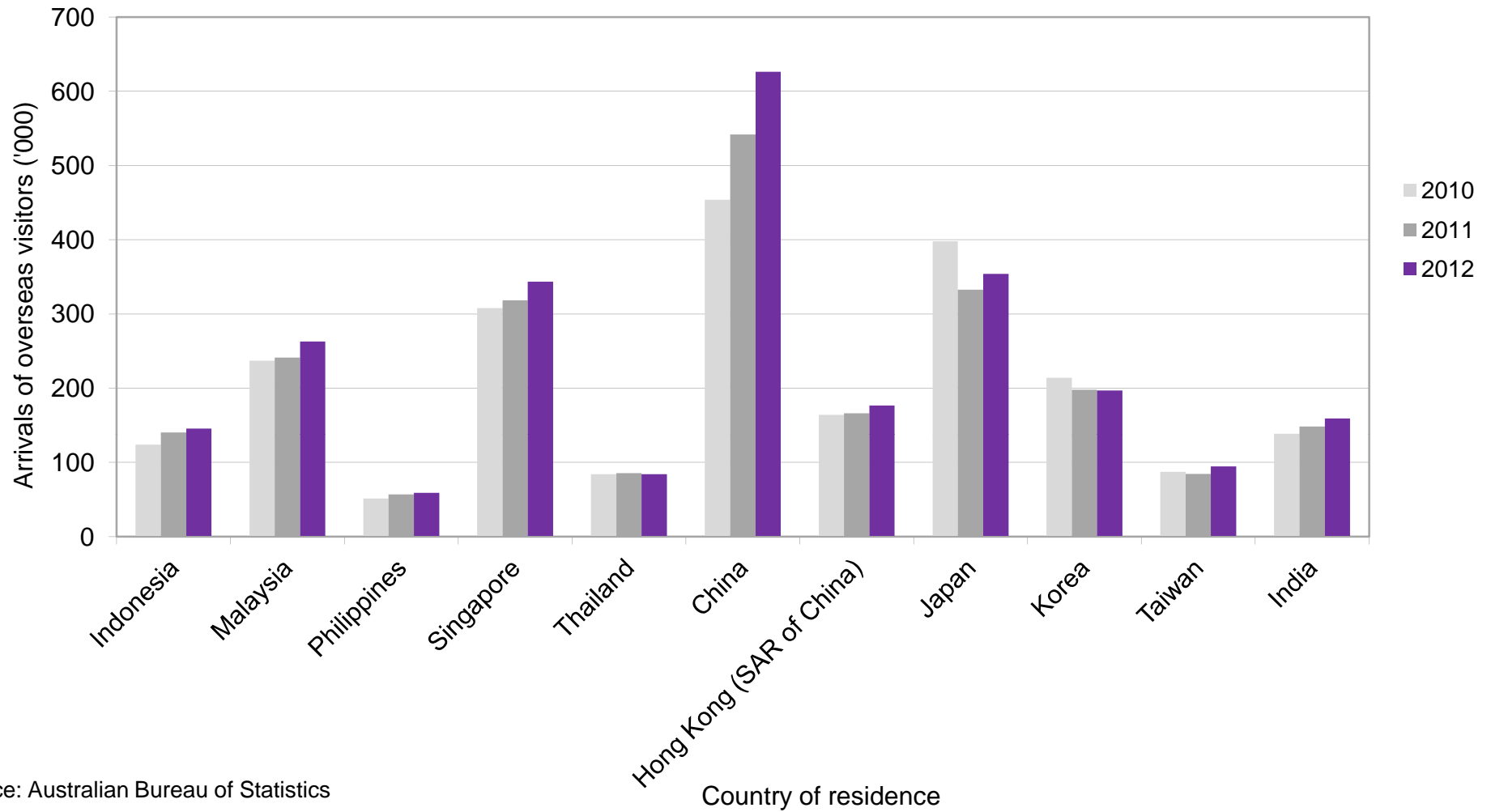
2010 to 2012



Source: Australian Bureau of Statistics



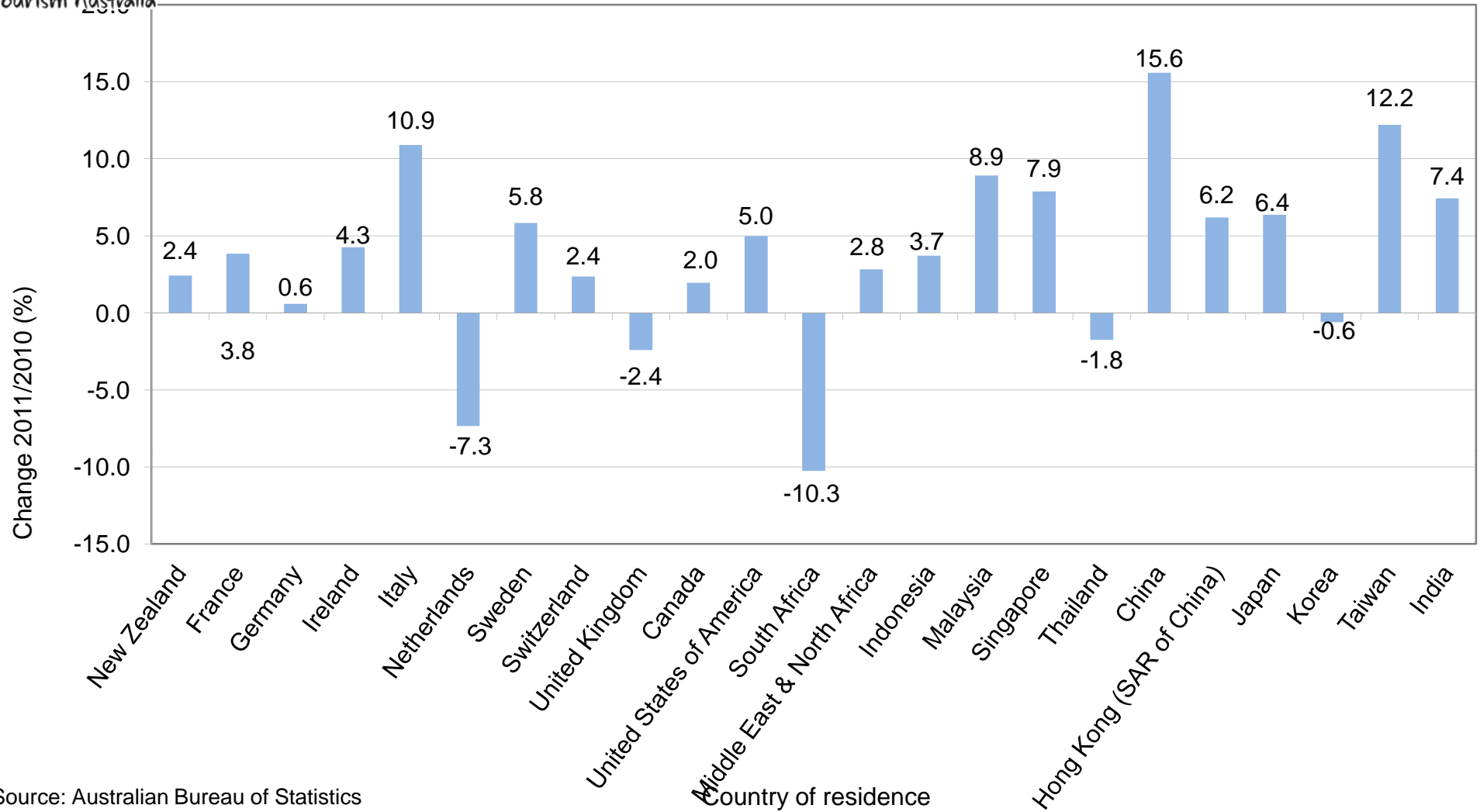
Chart 2 - Eastern hemisphere visitors by country of residence 2010 to 2012



Source: Australian Bureau of Statistics

Chart 3 - Change in visitors by country of residence

Year ended 31 December 2012 relative to the previous year



Source: Australian Bureau of Statistics